

ENVIRONMENTAL JUSTICE AND COMMUNITY IMPACT REPORT



STUDY RESULTS
OCTOBER 2003

New Connector HARLAN TO HAZARD

Report Prepared
By:
SCOTTIE K. CORNETT, KRADD
AND
CLAY McKNIGHT, CVADD

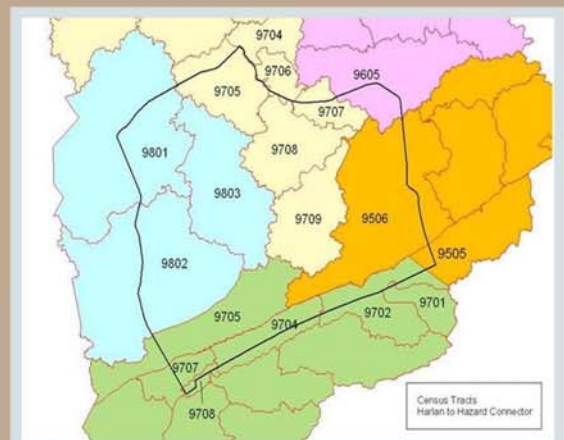


TABLE OF CONTENTS

- 1.0 Introduction
- 2.0 What is Environmental Justice?
- 3.0 Methodology
- 4.0 Census Data Analysis
- 5.0 Study Findings
- 6.0 Study Findings / *Population by Race*
- 7.0 Study Findings / *Population by Poverty Level*
- 8.0 Study Findings / *Population by Age*
- 9.0 Conclusion

APPENDIX 1
Planning Study Contact List

APPENDIX 2
Methodology for Assessing Potential Environmental Justice
Concerns for KYTC Planning Studies

APPENDIX 3
MAPS AND CHARTS:
Figure 5.1 – Study Area
Figures 6.1 – 6.3 Data by State, County, Tracts and Block Groups
Figures 7.1 – 7.3 Data by State, County, Tracts and Block Groups
Figures 8.1 – 8.3 Data by State, County, Tracts and Block Groups

Figure 9.1 – Maps of Population Concentrations Identified by:
Poverty Level – Perry and Leslie County
Age - Perry and Leslie Counties

1.0 INTRODUCTION

This document is an assessment of the community characteristics for the proposed new Harlan to Hazard Connector Area (Figure 5.1). The data used in this report has been compiled from a number of sources including the U.S. Census Bureau Census 2000, Kentucky Transportation Cabinet Division of Planning, local officials, and field observations of the project area. The information and results are intended to assist the Kentucky Transportation Cabinet in making informed and prudent transportation decisions in the project area, especially with regard to the requirements of Executive Order 12898¹, to ensure equal environmental protection to all groups potentially impacted by this project.

The New Harlan to Hazard Connector study area is approximately 550 square miles in southeastern Kentucky. It crosses three KYTC Districts (10, 11 and 12), two Area Development Districts (Cumberland Valley and Kentucky River), and five counties (Harlan, Perry, Leslie, Knott and Letcher). The boundaries of the study area are generally as follows:

- South – US 119, between Harlan and the Letcher County line
- West – US 421, between Harlan and the Hal Rogers Parkway (formerly Daniel Boone 9006)
- North – the Hal Rogers (DB 9006), Hazard, and KY 15
- East – a cross-county line between Carr Creek State Park and the Harlan/Letcher county line.

This report outlines Census 2000 statistics for the New Harlan to Hazard Connector Project Area using tables and maps. Statistics are provided on minority, low-income, and elderly populations for the project area, nation, state, region, tracts and block groups.

2.0 WHAT IS ENVIRONMENTAL JUSTICE?

The U.S. EPA Office of Environmental Justice (EJ) defines EJ as:

“The fair treatment and meaningful involvement of all people regardless of race, color, national origin, or income with respect to the development, implementation and enforcement of environmental laws, regulations and policies. Fair treatment means that no group of people, including racial, ethnic, or socio-economic group should bear a disproportionate share of the negative environmental consequences resulting from industrial, municipal, and commercial operations or the execution of federal, state, local and tribal programs and policies.”

A disproportionately high and adverse effect on a minority or low-income population means an adverse effect that:

1. is predominately borne by a minority population and/or low-income population, or
2. will be suffered by the minority population and/or low-income population and is appreciably more severe or greater in magnitude than the adverse effect that will be suffered by the non-minority population and/or non-low-income population.

¹ Executive Order 12898 signed on February 11, 1994 states “...each Federal agency shall make achieving environmental justice part of its mission by identifying and addressing, as appropriate, disproportionately high and adverse human health or environmental effects of its programs, policies, and activities on minority populations and low-income populations...”

2.1 Definitions

USDOT Order 5610.2 on EJ, issued in the April 15, 1997 Federal Register defines what constitutes low income and minority populations.

- Low-Income is defined as a person whose median household income is at or below the U.S. Department of Health and Human Services poverty guidelines.
- Minority is defined as a person who is: (1) Black (a person having origins in any black racial groups of Africa); (2) Hispanic (a person of Mexican, Puerto Rican, Cuban, Central or South American, or other Spanish culture or origin, regardless of race); (3) Asian American (a person having origins in any of the original peoples of the Far East, Southeast Asia, the Indian subcontinent, or the Pacific Islands); or (4) American Indian and Alaskan Native (a person having origins in any of the original people of North America and who maintains cultural identification through tribal affiliation or community recognition).
- Low-Income Population is defined as any readily identifiable group of low-income persons who live in geographic proximity, and, if circumstances warrant geographically dispersed/transient persons who will be similarly affected by a proposed DOT program, policy or activity.
- Minority Population is defined as any readily identifiable group of minority persons who live in geographic proximity, and if circumstances warrant, geographically dispersed/transient persons who will be similarly affected by a proposed DOT program, policy or activity.

EO 12898 and USOT Order 5610.2 do not address consideration of the elderly population. However, the U.S. DOT encourages the study of these populations in EJ discussions and in accordance with EJ, Title VI of the Civil Rights Act of 1964 and the Kentucky Transportation Cabinet's advocacy of inclusive public involvement and equal treatment of all persons this study includes statistics for persons age 62+ that are within the project and comparison areas.

3.0 METHODOLOGY

For this study, data was collected by using the method outlined by the KYTC document, "Methodology for Assessing Potential Environmental Justice Concerns for KYTC Planning Studies".

The primary sources of data were the US Census Bureau Census 2000, local leaders, and field observations. Statistics were compiled to present a detailed analysis of the community conditions for the New Harlan to Hazard Connector Project Area.

4.0 CENSUS DATA ANALYSIS

The U.S. Census Bureau defines geographical units as:

- Census Tract (CT) – “A small, relatively permanent statistical subdivision of a county or statistically equivalent entity delineated for data presentation purposes by a local group of census data users or the geographic staff of a regional census center in accordance with Census Bureau guidelines. CTs generally contain between 1,000 and 8,000 people. CT boundaries are delineated with the intention of being stable over many decades, so they generally follow relatively permanent visible features. They may also follow governmental unit boundaries and other invisible features in some instances; the boundary of a state or county is always a census tract boundary.”
- Block Group (BG) - “A statistical subdivision of a CT. A BG consists of all tabulation blocks whose numbers begin with the same digit in a CT. BGs generally contain between 300 and 3,000 people, with an optimum size of 1,500 people.”
- Census Block (CB) – “An area bounded on all sides by visible and/or invisible features shown on a map prepared by the Census Bureau. A CB is the smallest geographic entity for which the Census Bureau tabulates decennial census data.”

The project and comparison area analysis include the percentages for minorities, low-income and elderly population levels for the census tract block group, Harlan County, Perry County, Letcher County, Leslie County, Knott County, the Commonwealth of Kentucky and the United States.

5.0 STUDY FINDINGS

This Environmental Justice and Community Impact Report is to be used as a component of a Planning Study for highway transportation Improvements between Harlan, Kentucky and Hazard, Kentucky. This study is intended to help define the location and purpose of the project and better meet federal requirements regarding consideration of environmental issues as defined in the National Environmental Policy Act (NEPA).

The 2000 Census identifies 18 census tracts in this study. These tracts are listed below by county and are illustrated in Figure 5.1

Harlan County – 6 tracts
Perry County – 6 tracts
Letcher County – 2 tracts
Knott County – 1 tract
Leslie County – 3 tracts.

6.0 STUDY FINDINGS / POPULATION BY RACE

6.1 Harlan County

The previously defined study area in Harlan County encompasses portions of the following Census Tracts: 9701, 9702, 9704, 9705, 9707, and 9708. Following a compilation of pertinent information, CVADD Staff met with local officials and community members to review maps and Census data related to the study. The intent of these discussions was to confirm previous conclusions and solicit input into the process of developing the Environmental Justice Report.

The majority of Census Tracts and Block Groups in the study area contain minority populations that are considerably less than the national, state, and county averages; however, there are a few particular Census divisions in the study area that warrant further discussion.

Figure 6.2A displays that Tract 9701 has a considerably higher percentage of black population (16.2%) than the national, state, and county averages. Upon further review, Block Group 2 in Tract 9701 (Figure 6.3A) is the only Block Group within the Tract that is located in the study area, and it also must be noted that only a small portion of this Block Group falls into the area being evaluated. The black percentage of population in Block Group 2 is 9.2%, which is comparable with the national and state averages. Consultation with local officials and community members resulted in no significant concentrations of minorities being identified in the portion of Block Group 2 located directly in the study area.

Census Tract 9702 has a percentage of black population of 3.3%, which exceeds the county average of 2.7%, but is considerably less than the national and state averages. Block Group 3 in Tract 9702 contains a percentage of black population of 7.3%; while the other Block Groups in Tract 9702 located in the study area have percentages comparable with the county average. Although the percentage of black population in Block Group 3 is more than twice the average of the county, when viewing map of the study area it is evident that a very minute portion of this Block Group resides in the area of consideration. Local officials and community members informed CVADD Staff that they were unaware of any significant concentrations of minorities in the portions of Tract 9702 located in the study area.

Additionally, Census Tract 9708 contains a percentage of black population of 5.5% that exceeds the county average, but is less than the national and state averages. Separate discussions with the Harlan County Judge Executive and the Mayor of Harlan resulted in no significant minority concentrations being identified in Tract 9708.

Meetings with local officials and community members resulted in the conclusion that additional concentrations of minorities are not located in the study area; therefore, it is anticipated that the implementation of this project would not have a disproportionate effect on minorities residing in the proposed study area. CVADD Staff will continue to monitor racial composition in the study area and report any changes and/or developments that may occur in the future that could alter the findings of this report.

6.2 Perry County

The defined study area within Perry County encompasses portions of the following Census Tracts: 9704, 9705, 9706, 9707, 9708 and 9709. Figure 6.1 illustrates that Perry County's population by race percentages are comparable to that of the other counties in the study area and lower than the national and state averages. However, in Figure 6.2B there is a small elevation in the percentages of the Black and Asian populations.

Track 9705 and 9706 show a small increase in the Asian population which is higher the state average, but lower than the national average. Upon review and discussion with local community members, the higher concentration occurs in Block Group 1 of Tract 9705 (Figure 6.3B) The percentage is 3.9% which is higher than the national percentage of 3.6% but not a major concentration. This may or may not be of concern depending on the final route chosen for the study. In addition, after discussion and analysis, though the number is elevated it still is comparable with the national average which indicates the cultural diversity and the widespread racial immigration within the United States today.

Census Tract 9706 (Figure 6.2B) shows a higher percentage of black population when compared to the other tracts within Perry County. However, it is still lower than the state and national averages. Upon further review of the block groups, Census Tract 9705, Block Group 3 and Census Tract 9706, Block Groups 1, 2, and 3 show significantly higher percentages than the county.

When considering the black population of Kentucky, which is 7.3 %, the only block group that exceeds the state average is Block Group 2 of Census Tract 9706. The percentage of the Black population is at 10.4 % of the population. This Block group is in the Wabaco and Walkertown sections of Hazard, and is also within the city limits. There is a low income housing authority complex in this block group; however, according to the discussions with community members, there does not seem to be a specific concentration of the black population. Therefore, it appears that there is no specific minority concentration within the racial populations in Census Tract 9706 Block Group 2.

Otherwise, the majority of Census Tracts and Block Groups in the Perry County Study Area contain population percentages that are considerably less than the national, state, and county averages and does not appear to have any specific minority concentration of race.

6.3 Letcher County

The defined study area within Letcher County encompasses portions of the following Census Tracts: 9505 and 9506. When viewing Figure 6.1, you see that the population by race percentages for Letcher County are comparable to those of the counties in the study area and considerably lower than the national and state averages. Based on the census data, there appears to be no concentrations of minorities in this specific study area.

6.4 Knott County

The defined study area within Knott County encompasses portions of the following Census Tracts: 9605. Figure 6.1 shows that the population by race percentages for Knott County are comparable to those of the remaining counties in the study area, and significantly lower than the state and national averages. There appears to be no concentration of minorities in the Knott County Census Tract 9605. This is the only Census Tract identified in the study area.

6.5 Leslie County

The defined study area within Leslie County encompasses portions of the following Census Tracts: 9801, 9802, and 9803. Figure 6.1 indicates the Population by race percentages for Leslie County are comparable to the other counties identified in the study area. Census Tract Data and Block Group Data also indicate comparable or lower percentages than the state and national averages. (Figure 6.2E and 6.3E) Based on this data, there appears to be no minority concentration by race in the proposed study area.

Discussions with local officials and community members resulted in the conclusion that no major concentrations of minorities, specific to race, appear to be in the study area; therefore, it is anticipated that the implementation of this project would not have a disproportionate effect on minorities residing in the proposed study area. KRADD staff will continue to monitor racial composition in the study area and report any changes and/or developments that could alter the findings in this report.

7.0 STUDY FINDINGS / POPULATION BY POVERTY LEVEL

7.1 Harlan County

Figure 7.1 illustrates that the percentage of the population below poverty level for Harlan County and all Census Tracts in the study area significantly exceeds state and national averages. Percentages of population below the poverty level in these Tracts range from a low of 20.1% to a highpoint of 34.0%. A review of additional data shows that all Block Groups in the study area exceed the state and national averages for the percentage of population below the poverty level, and these percentages range from 17.5% to 39.1%, as illustrated in Figure 7.3A.

It is evident that a high percentage of population below poverty level is a universal issue that occurs throughout the entire county, as well as the other counties in this study area, and that the chance of encountering significant concentrations of populations falling under this distinction is very likely. It should also be noted that these percentages are indeed comparable to many surrounding counties in this particular section of southeastern Kentucky. All of the counties within this study area are often identified as economically distressed due to high unemployment rates that can be attributed to the unavailability of quality employment opportunities.

The proposed connector route is viewed by many local officials and community members as a project that could potentially be beneficial for further economic growth and development; thereby improving conditions for the population of the county that currently is declared as below poverty level. Following the selection of a preferred alternate for this proposed roadway, CVADD Staff recommends that a subsequent review of poverty data within affected Census divisions be undertaken to determine if particular concentrations of population below the poverty level exist in the project area; and if so, proactive measures be undertaken to insure that these groups are not disproportionately affected by the project.

7.2 Perry County

The defined study area within Perry County encompasses portions of the following Census Tracts: 9704, 9705, 9706, 9707, 9708 and 9709. Figure 7.1 illustrates that the percentage of the population below poverty level for the census tracts in Perry County is also significantly higher than state and national averages. Percentages in the Perry County Tracts range from a low of 19.2 % to a high of 43.2%. The State average is 15.3 % and the national average is 12.0 %. Figure 7.1 also indicates the highest population percentages below poverty level fall within the 18-64 age group. The next is the 0-17 age group and last is the 65+ age group.

Upon further analysis of the block group data, Census Tracts 9705, 9706, and 9707 contain block groups that are significantly higher than the percentages of Perry County, the state and the nation. (Figure 7.3B) Census Tract 9705, Block Group 3 shows the percent of population below poverty level as 52.6%.

Census Tract 9706, Block Group 2 shows an overall percentage below poverty level of 34.2 %. Another noticeable spike is in Block Group 3. The 65+ population is 1/3 of the population below poverty in that census tract.

Census Tract 9707, Block Groups 1 and 2 also show percentages higher than those of the county, state and the nation. The percentages are elevated across all age groups.

As previously mentioned, these percentages are comparable to those in surrounding counties. As stated above, the proposed connector route could potentially be beneficial for further economic growth and development; thereby improving conditions for the population of the county that currently is declared as below poverty level. Following the selection of a preferred alternate for this proposed roadway, KRADD Staff recommends that a subsequent review of poverty data within affected Census divisions be undertaken to determine if particular concentrations of population below the poverty level exist in the project area; and if so, proactive measures be undertaken to insure that these groups are not disproportionately affected by the project.

7.3 Letcher County

The defined study area within Letcher County encompasses portions of the following Census Tracts: 9505 and 9506. Figure 7.1 illustrates that the population below poverty level for Letcher County is comparable to the other counties in the study area. However, the percentage is also higher than the state and national averages for those living below poverty level. The percentages are fairly evenly distributed throughout both census tracts 9505 and 9506, as per Figure 7.2C. Therefore it is noted that the populations below poverty level in these tracts of Letcher County are again consistent with the levels throughout this region and higher than those percentages of the state or the nation.

7.4 Knott County

The defined study area within Knott County encompasses portions of the following Census Tracts: 9605. Figure 7.1 shows the percentage of population below poverty level in Knott County is 30.2 %. This is higher than the state percentage of 15.3% and that of the nation at 12.0%. The Census Tract and Block Groups (Figures 7.2D and 7.3D) are comparable to the percentages for Knott County, for all age levels. Again, there appears to be no significant concentration if you consider the socio-economics of the region.

7.5 Leslie County

The defined study area within Leslie County encompasses portions of the following Census Tracts: 9801, 9802, and 9803. Figure 7.1 illustrates that the percentages for the population below poverty level is consistent with that of the region. Again these percentages are significantly higher than those for the state and the nation.

Figures 7.2E and 7.3E further indicate Tract 9802 has a higher percentage overall than that of Leslie County, however; it still remains consistent with the percentages in the region. Census Tract 9801, Block Group 1 further shows an elevated percentage for total population below poverty level, specific to the age group 18-64. Block Group 3 shows a high percentage of the 65+ population below poverty level.

Census Tract 9802, Block Group 1 has the highest increase in percentage showing an elevation for all age groups. The overall population is 45.3%, age group 0-17 is at 15.3 %, age group 18-64 is at 25.6% and 65 and over at 4.2%. All of these exceed the percentages of the State, the nation, the county and the census tract. Still, when considering the entire study area and the percentages of all the counties, this elevation in the population below poverty level is not unexpected.

Again, upon the selection of a preferred alternate for this proposed roadway, a subsequent review of poverty data within the affected census tracts be undertaken to determine if particular concentrations of population might be adversely affected.

8.0 STUDY FINDINGS / POPULATION BY AGE GROUP

8.1 Harlan County

Aging characteristics in the overall population of Harlan County are very similar to the national and state averages; however, there are three Census Tracts that have a higher percentage of persons age 65 and over than the national, state, and county averages.

Figure 8.2A shows that Tract 9701 has a percentage of persons age 65 and over of 18.6%. Block Group 2, which is the only Block Group in this Tract located in the study area, contains 17.3% of persons age 65 and over (Figure 8.3A). It should be noted once again that only a small portion of the Block Group is in the study area. Local officials and community members explained that the concentrations of elderly citizens in this Block Group are located in areas outside of the study area including the cities of Benham and Lynch.

Tract 9702 also has a percentage of persons age 65 and over (16.4%) that exceeds the national, state, and county percentages. The most significant concentration of this population can be found in Block Group 5, which has an average of 22.2%. Local officials and community members explained that this high percentage is most likely due to the fact that the Brithaven assisted living facility is located within this Block Group in the Coal Town section of Harlan County along the northern side of US 119.

The percentage of persons age 65 and over residing in Tract 9708 is 18.0%. Block Groups 1 and 2 in this Tract have percentages of 17.9% and 18.5% respectively. Local officials and community members expressed that there was no significant concentration of individuals in this age group located in either of these Block Groups.

Discussions with local officials and community members resulted in the conclusion that additional concentrations of persons age 65 and over are not located in the study area; therefore, it is anticipated that the implementation of this project would not have a disproportionate effect the population of persons age 65 and over residing in the proposed study area.

8.2 Perry County

The defined study area within Perry County encompasses portions of the following Census Tracts: 9704, 9705, 9706, 9707, 9708 and 9709. Again, the aging characteristics and percentages for Perry County are in line with those of the other counties in the study area, the state and the nation. (Figure 8.1) However, there are some slight increases in some age groups in four of the Census Tracts. Census Tract 9704 (Figure 8.3B) Block Group 3 has a significant increase in the number of people 65 and over. This area is Airport Gardens. After discussions with other community members, it appeared that the increased percentage for this area is most likely due to the fact that the Hazard Nursing Home is located in this block group. It is also an older section of Hazard. The Hazard Senior Citizens Center is also located within this block group. This block group is north of Hazard and may not fall within the proposed routes. A re-examination of the data is recommended once a final route has been chosen.

Census Tract 9705, Block Group 3 has a slight increase in the population of 0-17 year olds, at 31.0% of the population. There is also a small elevation in the 18-64 population for Block groups 1, 2, and 4 in the same

Tract. Census Tract 9706, Block Groups 3 and 4 show a higher population of ages 65 and over. Block group 3 is downtown Hazard. There is a senior living facility called the Carl Perkins High-rise. Meals for the local seniors are also served at this location in the community. Block Group 4 is the Lothair section of Hazard. The Ali Gorman Towers, a senior living facility, is also located in this block group. This area is in within the city limits and may or may not be affected.

Census Tract 9708 shows a slightly higher population percentage for ages 18-64 than that of the state and county. This tract is south of Hazard in the Viper and Macey's Creek section right outside of Hazard. After visiting the community and discussing the block group with other community members, there appears to be 2 major coal processing plants, several small coal mining operations, 2 local elementary schools, and a small town like community including but not limited to a post office, store, funeral home and a bank. These are all active and/or business related sites that would explain a higher concentration of the working age group, 18-64.

Again, these percentages indicate small concentrations by age. However, these census tracts are all in or around the city of Hazard. Following the selection of a preferred alternate for this proposed roadway, a subsequent review of population by age data within affected Census divisions should be undertaken to determine if particular concentrations of population specific to age exist in the project area; and if so, proactive measures be undertaken to insure that these groups are not disproportionately affected by the project.

8.3 Letcher County

The defined study area within Letcher County encompasses portions of the following Census Tracts: 9505 and 9506. As per Figure 8.1, the percentages for the age population are consistent across (all age groups) with those of the other counties in the study, the state, and the nation. Both Census Tracts and all Block groups are comparable with other averages as well. Based on the census data and other discussions, there seem to be no significant concentration of a specific age group in this study area.

8.4 Knott County

The defined study area within Knott County encompasses portions of the following Census Tracts: 9605. Figure 8.1 indicates comparable percentages for Knott County. Census Tract 9605 percentages in Figures 8.2D and 8.3D are also in line with the percentages of the surrounding counties, the state, and the nation. None of the percentages are elevated high to indicate a specific concentration. Based on the census data, there appear to be no specific concentrations noted in this portion of the study area.

8.5 Leslie County

The defined study area within Leslie County encompasses portions of the following Census Tracts: 9801, 9802, and 9803. Figures 8.1 and 8.2E illustrate that the percentages for the population by age are similar to those of surrounding counties, the state and the nation. The Census Tracts are also comparable. The only noticeable elevations, which may indicate a small concentration, are noted in the Block Groups. (Figure 8.3E)

Census Tract 9801, Block Group 4 has a population of 65 and over of 18.7 %. This is much higher than the Census Tract at 13.0%, the county at 11.4%, the state at 12.5 %, or the nation at 12.5 %. The city of Hyden is within this block group. This is predominately an older community. There is a senior citizens center called Tim Lee Carter Center located within this block group. There is also the Hyden Manor Nursing Home. Based on the final route chosen, this block group may or may not be disproportionately affected.

Census Tract 9802, Block Group 2 and Tract 9803, Block Group 1 both have higher percentages of 18-64 year olds at 65.2%. The national percentage is 61.9% and the state average is 62.9. Again, these are elevated numbers, but not extreme indications. Based on data and discussions with local community members, there appear to be no specific concentrations identified.

9.0 CONCLUSION

Based on data obtained from the U.S. Census Bureau for income, race and age, discussions with local officials and field observations there appear to be several small concentrations of populations by race, and by age in Harlan, Perry and Leslie counties. The concentrations identified in Harlan and Perry counties may not be affected by a new route considering their proximity and previous discussions about possible routes. The small concentrations by age that were identified in Leslie County may or may not be disproportionately affected. A re-examination of the data is suggested once a final route has been chosen. The elevated percentages in the populations below poverty level might be indicative of concentrations throughout the study area. However, based on the economic status of these rural depressed counties, these percentages are not uncommon for this area.

Analysis of the minority population data showed several of the block groups as having an identified concentration of some sort. Some were significant, some were only minor. The more significant concentrations noted were noted in the narrative analysis of that county and will also be map attachments in Figure 9.1. The maps pinpoint those concentrations for concern in three identified populations: Race; Poverty Level, and Age.

Again, following the selection of a preferred alternate for this proposed roadway, KRADD and CVADD staff recommends that a subsequent review of the data be performed. The study area involved over 550 square acres, five fairly large counties and 118,000 people. Efforts were made to identify any high concentrations of a specific population. Community citizens, other ADD planners, local officials, and statistical data were all used in this process.

Population Concentrations Identified for Concern:

- **Population by Race:**

No Major concentrations noted at this time. Following the selection of a preferred alternate for this proposed roadway, a subsequent review of data within affected Census divisions be undertaken to determine if particular concentrations of population by race exist in the project area; and if so, proactive measures be undertaken to insure that these groups are not disproportionately affected by the project.

- **Population by Poverty Level:**

Perry County – Census Tract 9705 – Block Group 3
Perry County – Census Tract 9706 – Block Groups 2, 3 and 4
Leslie County – Census Tract 9801 – Block Group 1
Leslie County – Census Tract 9802 – Block Group 1

(NOTE: Though these are the minority concentrations identified in the data analysis, they may not be disproportionately affected. A new connector for these counties may have a positive impact on those Census Tracts with populations below poverty level.)

- **Population by Age:**

Perry County – Census Tract 9705 – Block Group 3
Leslie County – Census Tract 9801 – Block Group 4

(Following the selection of a preferred alternate for this proposed roadway, a subsequent review of data within affected Census divisions be undertaken to determine if particular concentrations of population by race exist in the project area; and if so, proactive measures be undertaken to insure that these groups are not disproportionately affected by the project.)

APPENDIX 1

PLANNING STUDY CONTACT LIST

PLANNING STUDY CONTACT LIST

MAYOR WILLIAM GORMAN
HAZARD CITY HALL
PO BOX 420
HAZARD KY 41702

JUDGE CARROLL SMITH
LETCHER CO COURTHOUSE
156 MAIN STREET STE 156
WHITESBURG KY 41858

JOHN CHESTER
KRADD-GIS
917 PERRY PARK ROAD
HAZARD, KY 41701

GREENE KEITH
RAILROAD AVENUE,
PO BOX 250
MANCHESTER, KY 40962

RONNIE BRYANT
P O BOX 420
HAZARD, KY 41702

MAYOR EUGENE STEWART
HYDEN CITY HALL
PO BOX 972
HYDEN KY 41749

JUDGE DENNY RAY NOBLE
PO BOX 210
HAZARD KY 41702

SHERIFF JOHN MORGAN
PO BOX 912
HYDEN KY 41749

KEITH DAMRON
DEPT. OF HIGHWAYS
DISTRICT 12
109 LORRAINE STREET
PIKEVILLE, KY 41501

MAYOR DANIEL HOWARD
CITY OF HARLAN
P.O. BOX 783
HARLAN, KY 40831

HONORABLE JOSEPH GRIESHOP
HARLAN COUNTY JUDGE EXEC.
P.O. BOX 956
HARLAN, KY 40831

MS. SHERRI NAPIER
ADMIN. ASSISTANT
P.O. BOX 956
HARLAN, KY 40831

MS. MELISSA ALLEN
CITY CLERK, CITY of HARLAN
P.O. BOX 783
HARLAN, KY 40831

APPENDIX 2

*METHODOLOGY
FOR ASSESSING
ENVIRONMENTAL JUSTICE CONCERNS*

APPENDIX 3

DATA SHEETS

1. EXISTING HIGHWAY SYSTEMS
2. GEOMETRIC CHARACTERISTICS OF EXISTING HIGHWAYS
3. CRASH ANALYSIS DATA

Environmental Justice Study - Study Area

Figure 5.1

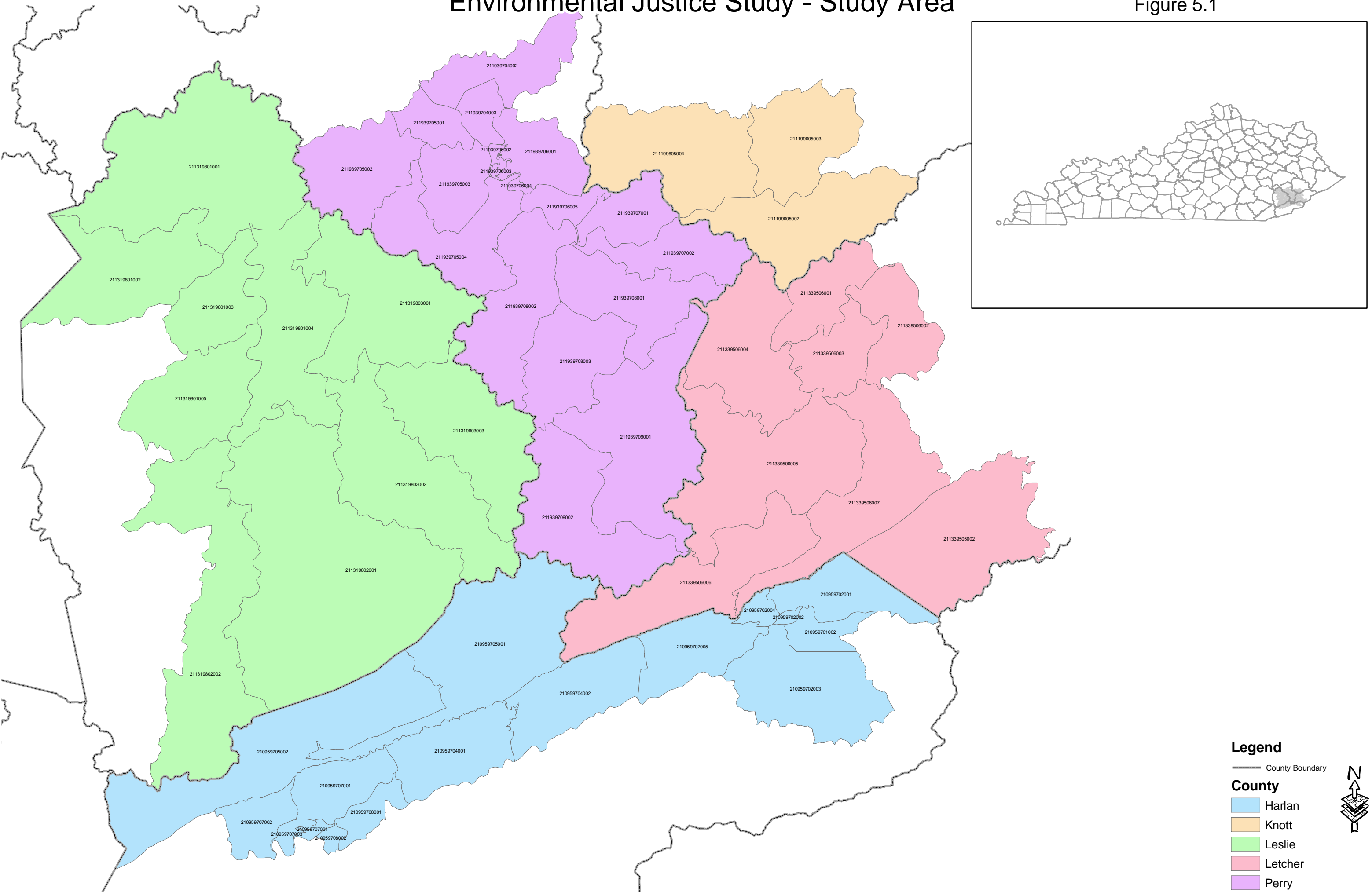


Figure 6.1

**POPULATION BY RACE COMPARISON CHART – PROJECT AREA
BY COUNTY**

COUNTY	White	% of Population	Black	% of Population	American Indian	% of Population	Asian	% of Population	Hispanic ¹	% of Hispanic	Other	% of Population	Total Population
United States	211,460,626	75.1 %	34,658,190	12.3 %	2,475,956	.8 %	10,242,998	3.6 %	35,305,818	12.5 %	22,584,136	8.3 %	281,421,906
Kentucky	3,640,899	90.0 %	295,994	7.3 %	8,616	.2 %	29,744	0.7 %	59,939	1.4 %	66,526	1.64 %	4,041,769
Harlan Co.	31,566	95.0 %	865	2.7 %	148	.4 %	95	.2 %	216	.6 %	191	.5 %	33,202
Perry Co.	28,469	96.8 %	478	1.6 %	13	.0 %	143	.4 %	154	.5 %	133	.4 %	29,390
LETCHER	24,853	98.3 %	129	.5 %	23	.0 %	70	.2 %	110	.4 %	92	.3 %	25,277
Knott Co.	17,252	97.7 %	129	.7 %	18	.1 %	27	.1 %	112	.6 %	111	.6 %	17,649
Leslie Co.	12,232	98.6 %	9	.0 %	11	.0 %	15	.1 %	77	.6 %	57	.4 %	12,401

Figure 6.2A

POPULATION BY RACE COMPARISON CHART FOR CENSUS TRACT GROUPS IN PROJECT AREA – HARLAN COUNTY

TRACTS	White	% of Population	Black	% of Population	American Indian	% of Population	Asian	% of Population	Hispanic ¹	% of Hispanic	Other	% of Population	Total Population
United States	211,460,626	75.1 %	34,658,190	12.3 %	2,475,956	.8 %	10,242,998	3.6 %	35,305,818	12.5 %	22,584,136	8.3 %	281,421,906
Kentucky	3,640,899	90.0 %	295,994	7.3 %	8,616	.2 %	29,744	0.7 %	59,939	1.4 %	66,526	1.64 %	4,041,769
Harlan Co.	31,566	95.0 %	865	2.7 %	148	.4 %	95	.2 %	216	.6 %	191	.5 %	33,202
Tract 9701	1,472	81.95 %	291	16.2 %	4	0.2 %	1	0.1 %	12	0.7 %	18	1.0 %	1,798
Tract 9702	3,639	94.9 %	128	3.3 %	5	0.1 %	1	0.0 %	27	0.7 %	33	0.9 %	3,833
Tract 9704	1,247	98.1 %	0	0.0 %	2	0.2 %	1	0.1 %	15	1.2 %	6	0.5 %	1,271
Tract 9705	1,618	99.1 %	0	0.0 %	4	0.2 %	0	0.0 %	5	0.3 %	5	0.3 %	1,632
Tract 9707	4,205	96.5 %	20	0.5 %	20	0.5 %	32	0.7 %	19	0.4 %	61	1.4 %	4,357
Tract 9708	1,404	91.0 %	85	5.5 %	9	0.6 %	21	1.4 %	9	0.6 %	15	1.0 %	1,543

Figure 6.2B

POPULATION BY RACE COMPARISON CHART FOR CENSUS TRACT GROUPS IN PROJECT AREA – PERRY COUNTY

TRACTS	White	% of Population	Black	% of Population	American Indian	% of Population	Asian	% of Population	Hispanic ¹	% of Hispanic	Other	% of Population	Total Population
United States	211,460,626	75.1 %	34,658,190	12.3 %	2,475,956	.8 %	10,242,998	3.6 %	35,305,818	12.5 %	22,584,136	8.3 %	281,421,906
Kentucky	3,640,899	90.0 %	295,994	7.3 %	8,616	.2 %	29,744	0.7 %	59,939	1.4 %	66,526	1.6 %	4,041,769
Perry Co	28,469	96.8 %	478	1.6 %	13	.0 %	143	.4 %	154	.5 %	133	.4 %	29,390
Tract 9704	4,241	97.3 %	54	1.2 %	1	.0 %	19	.4 %	27	.6 %	17	.3 %	4,359
Tract 9705	5,529	95.8 %	119	2.0 %	1	.0 %	55	.9 %	40	.6 %	23	.3 %	5,767
Tract 9706	4,729	91.6 %	292	5.6 %	4	.0 %	55	1.0 %	34	.6 %	46	.8 %	5,160
Tract 9707	2,144	99.1 %	3	.1 %	0	.0 %	1	.0 %	7	.3 %	7	.3 %	2,162
Tract 9708	3,385	99.0 %	0	.0 %	2	.0 %	3	.0 %	19	.5 %	8	.2 %	3,417
Tract 9709	1,741	98.5 %	5	.2 %	4	.2 %	1	.0 %	11	.6 %	4	.2 %	1,766

Figure 6.2C

POPULATION BY RACE COMPARISON CHART FOR CENSUS TRACT GROUPS IN PROJECT AREA – LETCHER COUNTY

TRACTS	White	% of Population	Black	% of Population	American Indian	% of Population	Asian	% of Population	Hispanic ¹	% of Hispanic	Other	% of Population	Total Population
United States	211,460,626	75.1 %	34,658,190	12.3 %	2,475,956	.8 %	10,242,998	3.6 %	35,305,818	12.5 %	22,584,136	8.3 %	281,421,906
Kentucky	3,640,899	90.0 %	295,994	7.3 %	8,616	.2 %	29,744	0.7 %	59,939	1.4 %	66,526	1.6 %	4,041,769
Letcher Co	24,853	98.3 %	129	.5 %	23	.0 %	70	.2 %	110	.4 %	92	.3 %	25,277
Tract 9505	1,651	99.3 %	0	.0 %	8	.4 %	0	.0 %	9	.5 %	0	.0 %	1,662
Tract 9506	5,521	99.4 %	3	.0 %	0	.0 %	0	.0 %	8	.1 %	22	.3 %	5,554

Figure 6.2D

POPULATION BY RACE COMPARISON CHART FOR CENSUS TRACT GROUPS IN PROJECT AREA – KNOTT COUNTY

TRACTS	White	% of Population	Black	% of Population	American Indian	% of Population	Asian	% of Population	Hispanic ¹	% of Hispanic	Other	% of Population	Total Population
United States	211,460,626	75.1 %	34,658,190	12.3 %	2,475,956	.8 %	10,242,998	3.6 %	35,305,818	12.5 %	22,584,136	8.3 %	281,421,906
Kentucky	3,640,899	90.0 %	295,994	7.3 %	8,616	.2 %	29,744	0.7 %	59,939	1.4 %	66,526	1.6 %	4,041,769
Knott Co	17,252	97.7 %	129	.7 %	18	.1 %	27	.1 %	112	.6 %	111	.6 %	17,649
Tract 9605	4,382	96.5 %	103	2.2 %	5	.1 %	1	.0 %	29	.6 %	19	.4 %	4,539

Figure 6.2E

POPULATION BY RACE COMPARISON CHART FOR CENSUS TRACT GROUPS IN PROJECT AREA – LESLIE COUNTY

TRACTS	White	% of Population	Black	% of Population	American Indian	% of Population	Asian	% of Population	Hispanic ¹	% of Hispanic	Other	% of Population	Total Population
United States	211,460,626	75.1 %	34,658,190	12.3 %	2,475,956	.8 %	10,242,998	3.6 %	35,305,818	12.5 %	22,584,136	8.3 %	281,421,906
Kentucky	3,640,899	90.0 %	295,994	7.3 %	8,616	.2 %	29,744	0.7 %	59,939	1.4 %	66,526	1.6 %	4,041,769
Leslie Co	12,232	98.6 %	9	.0 %	11	.0 %	15	.1 %	77	.6 %	57	.4 %	12,401
Tract 9801	5,657	98.6 %	4	.0 %	6	.1 %	10	.1 %	29	.5 %	30	.5 %	5,736
Tract 9802	3,188	98.6 %	5	.1 %	2	.0 %	0	.0 %	22	.6 %	15	.4 %	3,232
Tract 9803	3,387	98.6 %	0	.0 %	3	.0 %	5	.1 %	26	.7 %	12	.3 %	3,433

Figure 6.3A

**POPULATION BY RACE COMPARISON CHART FOR CENSUS
TRACT BLOCK GROUPS IN PROJECT AREA – HARLAN COUNTY**

HARLAN County	White	% of Population	Black	% of Population	American Indian	% of Population	Asian	% of Population	Hispanic¹	% of Hispanic	Other	% of Population	Total Population
Tract 9701	1,472	81.95 %	291	16.2 %	4	0.2 %	1	0.1 %	12	0.7 %	18	1.0 %	1,798
Block Grp. 2	767	89.0 %	79	9.2 %	1	0.1 %	1	0.1 %	9	1.0 %	5	0.6 %	862
Tract 9702	3,639	94.9 %	128	3.3 %	5	0.1 %	1	0.0 %	27	0.7 %	33	0.9 %	3,833
Block Grp 1	885	95.8 %	19	2.1 %	0	0.0 %	0	0.0 %	4	0.4 %	16	1.7 %	924
Block Grp 2	549	95.0 %	20	3.5 %	2	0.3 %	1	0.2 %	0	0.0 %	6	1.0 %	578
Block Grp 3	840	90.3 %	68	7.3 %	2	0.2 %	0	0.0 %	14	1.5 %	6	0.6 %	930
Block Grp 4	593	96.0 %	17	2.8 %	1	0.2 %	0	0.0 %	6	1.0 %	1	0.2 %	618
Block Grp 5	772	98.6 %	4	0.5 %	0	0.0 %	0	0.0 %	3	0.4 %	4	0.5 %	783
Tract 9704	1,247	98.1 %	0	0.0 %	2	0.2 %	1	0.1 %	15	1.2 %	6	0.5 %	1,271
Block Grp 1	632	98.4 %	0	0.0 %	0	0.0 %	0	0.0 %	5	0.8 %	5	0.8 %	642
Block Grp 2	615	97.8 %	0	0.0 %	2	0.3 %	1	0.2 %	10	1.6 %	1	0.2 %	629
Tract 9705	1,618	99.1 %	0	0.0 %	4	0.2 %	0	0.0 %	5	0.3 %	5	0.3 %	1,632
Block Grp 1	569	99.0 %	0	0.0 %	2	0.3 %	0	0.0 %	0	0.0 %	4	0.7 %	575
Block Grp 2	1049	99.2 %	0	0.0 %	2	0.2 %	0	0.0 %	5	0.5 %	1	0.1 %	1,057
Tract 9707	4,205	96.5 %	20	0.5 %	20	0.5 %	32	0.7 %	19	0.4 %	61	1.4 %	4,357
Block Grp 1	1,162	93.6 %	14	1.1 %	7	0.6 %	14	1.1 %	9	0.7 %	36	2.9 %	1,242
Block Grp 2	1,015	98.5 %	1	0.1 %	4	0.4 %	0	0.0 %	8	0.8 %	2	0.2 %	1,030
Block Grp 3	690	96.8 %	2	0.3 %	2	0.3 %	14	2.0 %	0	0.0 %	5	0.7 %	713
Block Grp 4	607	97.7 %	1	0.2 %	5	0.8 %	0	0.0 %	0	0.0 %	8	1.3 %	621
Tract 9708	1,404	91.0 %	85	5.5 %	9	0.6 %	21	1.4 %	9	0.6 %	15	1.0 %	1,543
Block Grp 1	1,014	90.9 %	61	5.5 %	7	0.6 %	17	1.5 %	8	0.7 %	9	0.8 %	1,116
Block Grp 2	390	91.3 %	24	5.6 %	2	0.5 %	4	0.9 %	1	0.2 %	6	1.4 %	427

Source: 2000 US Census

Figure 6.3C

POPULATION BY RACE COMPARISON CHART FOR CENSUS TRACT BLOCK GROUPS IN PROJECT AREA – LETCHER COUNTY

LETCHER County	White	% of Population	Black	% of Population	American Indian	% of Population	Asian	% of Population	Hispanic¹	% of Hispanic	Other	% of Population	Total Population
Tract 9505	1,651	99.3 %	0	.0 %	8	.4 %	0	.0 %	9	.5 %	0	.0 %	1,662
Block Grp 2	1,015	98.3 %	0	.0 %	8	.7 %	0	.0 %	7	.6 %	2	.1 %	1,032
Tract 9506	5,521	99.4 %	3	.0 %	0	.0 %	0	.0 %	8	.1 %	22	.3 %	5,554
Block Grp 1	758	98.6 %	1	.1 %	0	.0 %	0	.0 %	1	.1 %	8	1.0 %	768
Block Grp 3	653	99.3 %	0	.0 %	0	.0 %	0	.0 %	3	.4 %	1	.1 %	657
Block Grp 4	912	98.8 %	0	.0 %	0	.0 %	0	.0 %	3	.3 %	8	.8 %	923
Block Grp 5	766	100.0 %	0	.0 %	0	.0 %	0	.0 %	0	.0 %	0	.0 %	766
Block Grp 6	620	100.0 %	0	.0 %	0	.0 %	0	.0 %	0	.0 %	0	.0 %	620
Block Grp 7	872	99.6 %	0	.0 %	0	.0 %	0	.0 %	0	.0 %	3	.3 %	875

Figure 6.3D

POPULATION BY RACE COMPARISON CHART FOR CENSUS TRACT BLOCK GROUPS IN PROJECT AREA – KNOTT COUNTY

KNOTT County	White	% of Population	Black	% of Population	American Indian	% of Population	Asian	% of Population	Hispanic¹	% of Hispanic	Other	% of Population	Total Population
Tract 9605	4,382	96.5 %	103	2.2 %	5	.1 %	1	.0 %	29	.6 %	19	.4 %	4,539
Block Grp 2	1,018	92.2 %	70	6.3 %	1	.0 %	0	.0 %	10	.9 %	5	.4 %	1,104
Block Grp 3	884	99.1 %	1	.1 %	0	.0 %	0	.0 %	4	.4 %	3	.3 %	892
Block Grp 4	1,173	95.9 %	30	2.4 %	1	.0 %	1	.0 %	9	.7 %	9	.7 %	1,223

Figure 7.1

**POPULATION BY POVERTY LEVEL
COMPARISON CHART
FOR PROJECT AREA BY COUNTY**

	Population Below Poverty Level	Percent of Population	Age 0-17	% of Total Population	Age 18-64	% of Total Population	Age 65-Over	% of Total Population
United States	33,899,812	12.0 %	11,746,858	4.1 %	18,865,180	6.7 %	3,287,774	1.1 %
Kentucky	621,096	15.3 %	203,547	5.0 %	350,072	8.6 %	67,477	1.6 %
HARLAN CO	10,662	32.1 %	3,336	10.0 %	6,401	19.2 %	925	2.7 %
PERRY CO	8,426	28.6 %	2,588	8.8 %	5,187	17.6 %	651	2.2 %
LETCHER CO	6,771	26.7 %	2,147	8.4 %	3,981	15.7 %	643	2.5 %
KNOTT CO	5333	30.2 %	1,717	9.7 %	3,171	17.9 %	445	2.5 %
LESLIE CO	3,998	32.2 %	1,181	9.5 %	2,456	19.8 %	361	2.9 %

Source: 2000 US Census

Figure 7.3A

**POPULATION BY POVERTY LEVEL IN PROJECT AREA BY
CENSUS TRACT BLOCK GROUPS
FOR HARLAN COUNTY**

HARLAN COUNTY	Population Below Poverty Level	Percent of Population	Age 0-17	% of Total Population	Age 18-64	% of Total Population	Age 65-Over	% of Total Population
TRACT 9701	537	29.9 %	201	11.2 %	262	14.6 %	74	4.1 %
Block Grp. 2	190	22.0 %	73	8.5 %	92	10.7 %	25	2.9 %
TRACT 9702	1305	34.0 %	453	11.8 %	746	19.5 %	106	2.8 %
Block Grp. 1	292	31.6 %	135	14.6 %	151	16.3 %	6	0.6 %
Block Grp. 2	226	39.1 %	97	16.8 %	102	17.6 %	27	4.7 %
Block Grp. 3	353	38.0 %	106	11.4 %	200	21.5 %	47	5.1 %
Block Grp. 4	180	29.1 %	58	9.4 %	112	18.1 %	10	1.6 %
Block Grp. 5	254	32.4 %	57	7.3 %	181	23.1 %	16	2.0 %
TRACT 9704	260	20.1 %	90	7.1 %	156	12.3 %	14	1.1 %
Block Grp. 1	169	26.3 %	69	10.7 %	95	14.8 %	5	0.8 %
Block Grp. 2	91	14.5 %	21	3.3 %	61	9.7 %	9	1.4 %
TRACT 9705	459	28.1 %	175	10.7 %	234	14.3 %	50	3.1 %
Block Grp. 1	132	23.0 %	44	7.7 %	78	13.6 %	10	1.7 %
Block Grp. 2	327	30.9 %	131	12.4 %	156	14.8 %	40	3.8 %
TRACT 9707	957	22.0 %	253	5.8 %	606	13.9 %	98	2.2 %
Block Grp. 1	292	23.5 %	106	8.5 %	164	13.2 %	22	1.8 %
Block Grp. 2	309	30.0 %	57	5.5 %	227	22.0 %	25	2.4 %
Block Grp. 3	125	17.5 %	45	6.3 %	62	8.7 %	18	2.5 %
Block Grp. 4	138	22.2 %	18	2.9 %	110	17.7 %	10	1.6 %
TRACT 9708	359	23.3 %	58	3.8 %	210	13.6 %	91	5.9 %
Block Grp. 1	223	20.0 %	53	4.7 %	123	11.0 %	47	4.2 %
Block Grp. 2	136	31.9 %	5	1.2 %	87	20.4 %	44	10.3 %

Figure 7.3B

**POPULATION BY POVERTY LEVEL IN PROJECT AREA BY
CENSUS TRACT BLOCK GROUPS
FOR PERRY COUNTY**

PERRY COUNTY	Population Below Poverty Level	Percent of Population	Age 0-17	% of Total Population	Age 18-64	% of Total Population	Age 65-Over	% of Total Population
TRACT 9704	840	19.2 %	192	4.4 %	574	13.1 %	74	1.6 %
Block Grp. 2	387	26.7 %	86	5.9 %	256	17.7 %	45	2.6 %
Block Grp. 3	242	14.1 %	52	3.0 %	184	1.7 %	6	.3 %
TRACT 9705	2,060	35.7 %	689	11.9 %	1,252	21.7 %	119	2.0 %
Block Grp. 1	201	18.1 %	59	5.3 %	111	10.0 %	31	2.8 %
Block Grp. 2	635	37.6 %	210	12.4 %	394	23.3 %	31	1.8 %
Block Grp. 3	684	52.6 %	246	18.9 %	413	31.8 %	25	1.9 %
Block Grp. 4	540	32.1 %	174	10.3 %	334	19.9 %	32	1.9 %
TRACT 9706	1,374	26.6 %	426	8.2 %	841	16.2 %	107	2.0 %
Block Grp. 1	375	25.7 %	91	6.2 %	276	18.9 %	8	.5 %
Block Grp. 2	437	34.2 %	195	15.2 %	220	17.2 %	22	1.7 %
Block Grp. 3	162	18.2 %	19	2.1 %	93	10.4 %	50	5.6 %
Block Grp. 4	208	33.3 %	46	7.3 %	141	22.5 %	21	3.3 %
Block Grp. 5	192	21.0 %	75	8.2 %	111	12.1 %	6	.6 %
TRACT 9707	934	43.2 %	296	13.6 %	549	25.3 %	89	4.1 %
Block Grp. 1	336	46.0 %	89	12.2 %	198	27.1 %	49	4.7 %
Block Grp. 2	598	41.7 %	207	14.4 %	351	24.4 %	40	2.7 %
TRACT 9708	811	23.7 %	254	7.4 %	498	14.5 %	59	1.7 %
Block Grp. 1	275	27.2 %	91	9.0 %	150	14.8 %	34	3.3 %
Block Grp. 2	211	15.6 %	45	3.3 %	146	10.8 %	20	1.4 %
Block Grp. 3	325	30.6 %	118	11.1 %	202	14.9 %	5	.4 %
TRACT 9709	562	31.8 %	176	9.9 %	365	20.6 %	21	1.1 %
Block Grp. 1	373	33.6 %	126	11.3 %	236	21.3 %	11	.9 %
Block Grp. 2	189	28.6 %	50	7.5 %	129	19.5 %	10	1.5 %

Figure 8.1

AGE GROUP COMPARISON CHART FOR PROJECT AREA BY COUNTY

COUNTY	Age0-17	% of Total Population	Age18-64	% of Total Population	Age65-Over	% of Total Population	Total
United States	72,293,812	25.7 %	174,136,341	61.9 %	34,991,753	12.5 %	281,421,906
Kentucky	994,818	24.7 %	2,542,158	62.9 %	504,793	12.5 %	4,041,769
HARLAN	8,297	24.9 %	20,276	61.0 %	4,629	13.9 %	33,202
PERRY	7,161	24.3 %	18,941	64.4 %	3,288	11.1 %	29,390
LETCHER	5,996	23.7 %	16,098	63.6 %	3,183	12.5 %	25,277
KNOTT	4,319	24.4 %	11,326	64.1 %	2,004	11.3 %	17,649
LESLIE	3,051	24.6 %	7,926	63.9 %	1,424	11.4 %	12,401

Figure 8.3B

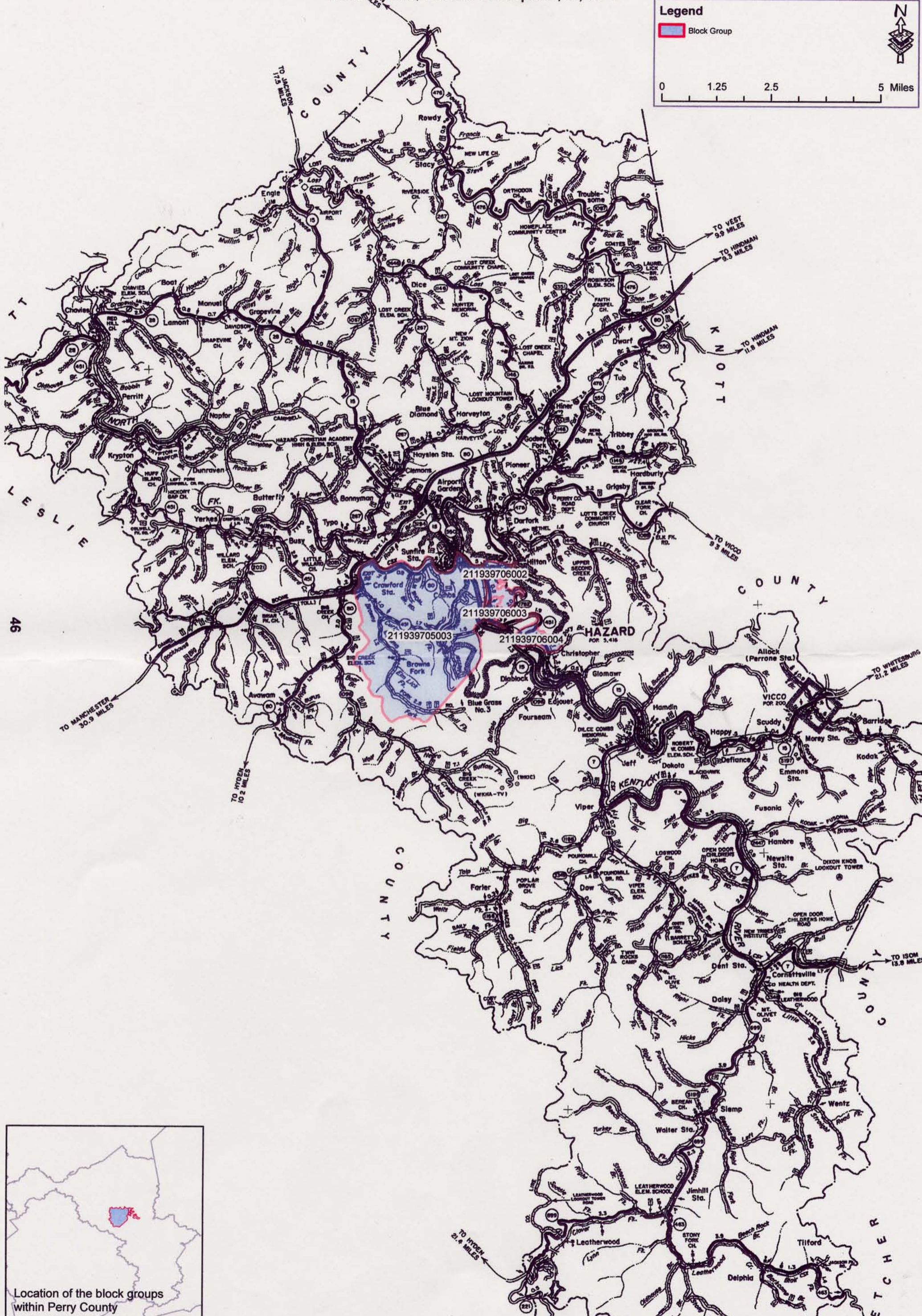
AGE GROUP COMPARISON CHART FOR PERRY COUNTY BY CENSUS TRACT BLOCK GROUPS

BLOCK GROUPS	0-17	% of Total Population	18-64	% of Total Population	65-Over	% of Total Population	Total
PERRY CO	7,161	24.3 %	18,941	64.4 %	3,288	11.1 %	29,390
TRACT 9704	992	22.7 %	2,686	61.6 %	681	15.6 %	4,359
Block Grp. 2	349	24.1 %	939	64.9 %	157	10.8 %	1,445
Block Grp. 3	343	20.1 %	997	58.4 %	366	21.4 %	1,706
TRACT 9705	1,514	26.2 %	3,753	65.0 %	500	8.6 %	5,767
Block Grp. 1	251	22.7 %	731	66.3 %	119	10.8 %	1,101
Block Grp. 2	437	25.9 %	1,101	65.3 %	148	8.7 %	1,686
Block Grp. 3	403	31.0 %	815	62.7 %	80	6.1 %	1,298
Block Grp. 4	423	25.1 %	1,106	65.7 %	153	9.0 %	1,682
TRACT 9706	1,151	22.3 %	3,256	63.1 %	753	14.5 %	5,160
Block Grp. 1	370	25.3 %	947	64.9 %	142	9.7 %	1,459
Block Grp. 2	319	25.0 %	799	62.6 %	157	12.3 %	1,275
Block Grp. 3	140	15.7 %	544	61.2 %	204	22.9 %	888
Block Grp. 4	99	15.8 %	383	61.3 %	142	22.7 %	624
Block Grp. 5	223	24.3 %	583	63.7 %	108	11.8 %	914
TRACT 9707	573	26.5 %	1,384	64.0 %	205	9.4 %	2,162
Block Grp. 1	170	23.3 %	488	66.9 %	71	9.7 %	729
Block Grp. 2	353	24.6 %	946	66.0 %	134	9.3 %	1,433
TRACT 9708	777	22.7 %	2,305	67.4 %	335	9.8 %	3,417
Block Grp. 1	211	20.9 %	676	67.0 %	121	12.0 %	1,008
Block Grp. 2	319	23.6 %	906	67.1 %	125	9.2 %	1,350
Block Grp. 3	247	23.3 %	723	68.2 %	89	8.4 %	1,059
TRACT 9709	414	23.4 %	1,163	65.8 %	189	10.7 %	1,766
Block Grp. 1	246	24.1 %	648	63.7 %	123	12.0 %	1,017
Block Grp. 2	168	25.4 %	425	64.4 %	66	10.0 %	659

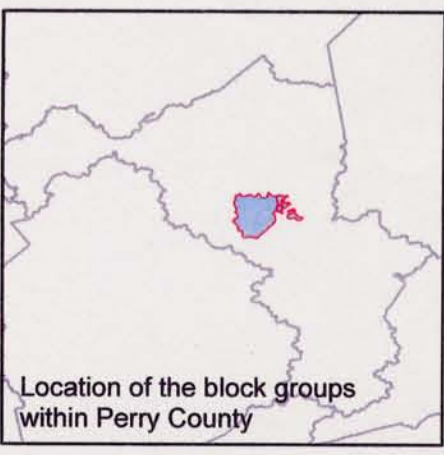
Concentraions of Residents Living in Poverty - Perry County

Tract 9705, Block Group 3
Tract 9706, Block Groups 2, 3, & 4

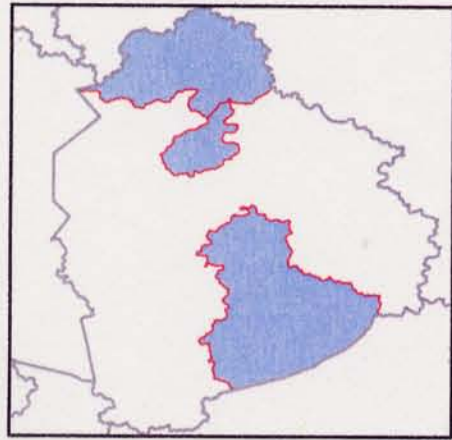
Legend
Block Group



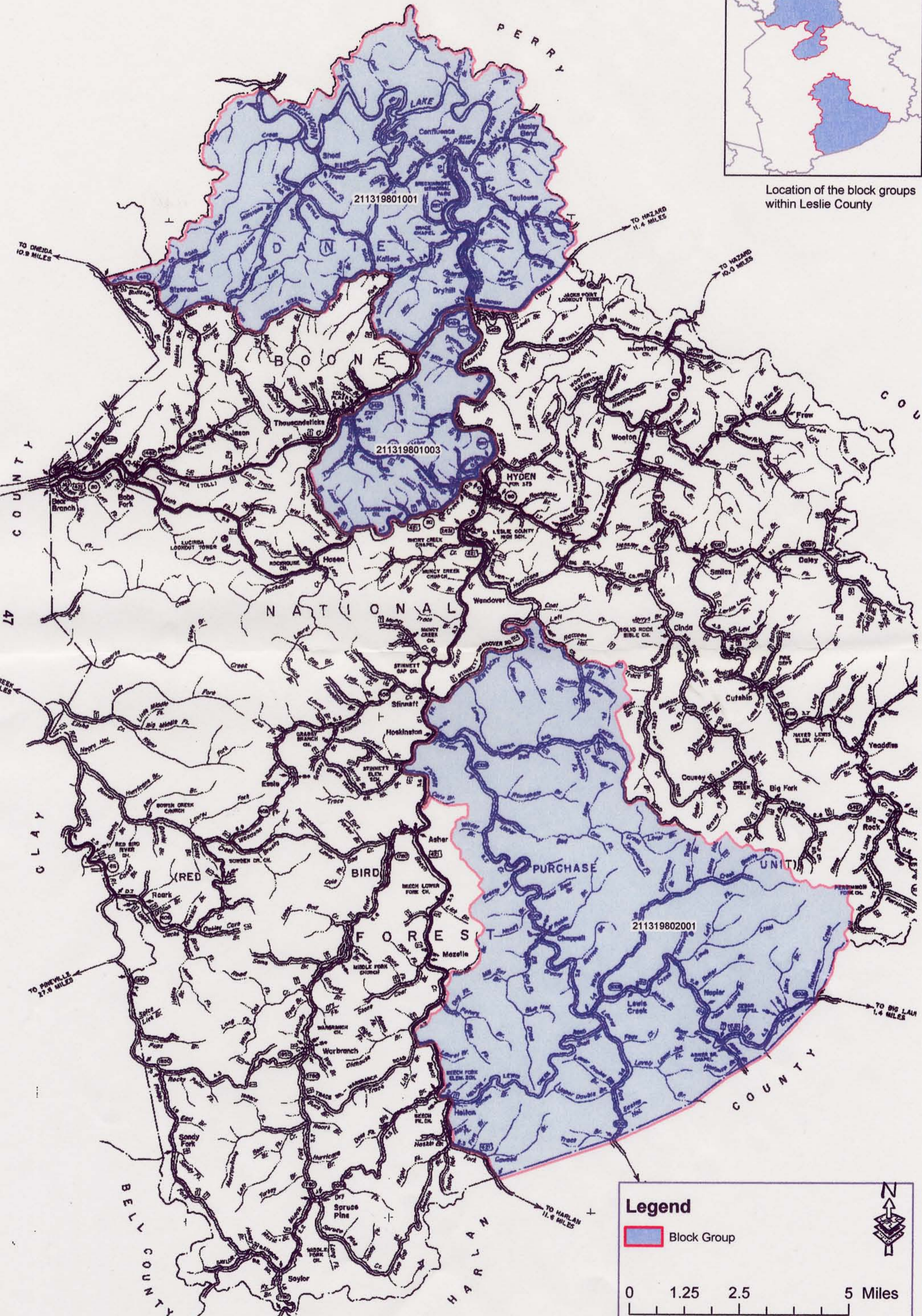
46




Concentrations of Residents Living in Poverty - Leslie County
 Tract 9801, Block Groups 1 & 3
 Tract 9802, Block Group 1




Location of the block groups within Leslie County



Legend

 Block Group

0 1.25 2.5 5 Miles

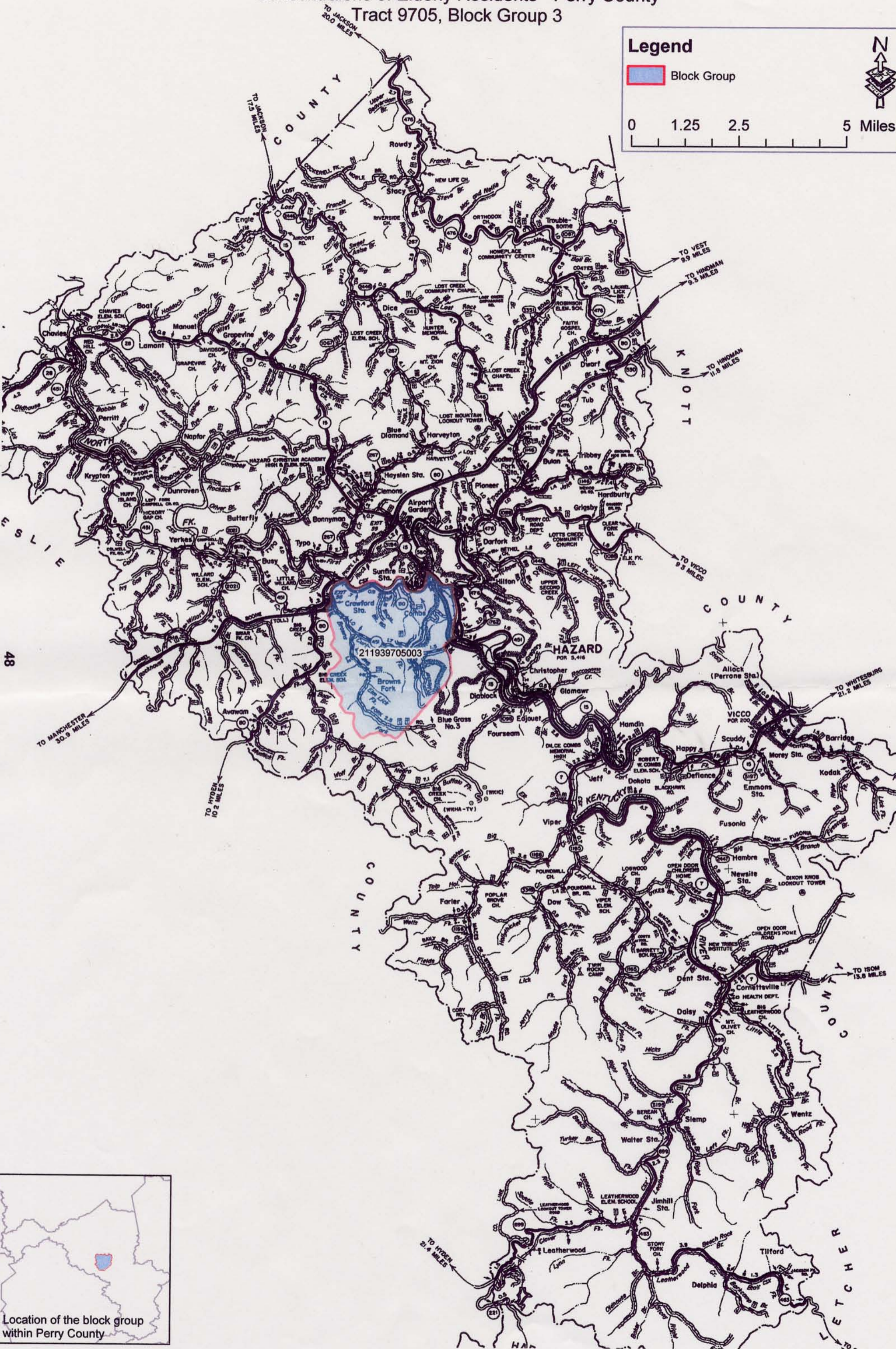


Concentraions of Elderly Residents - Perry County
Tract 9705, Block Group 3

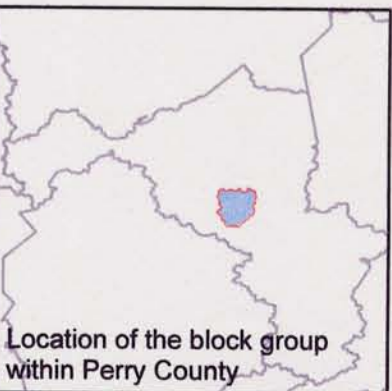
Legend

Block Group

0 1.25 2.5 5 Miles



48



Location of the block group within Perry County

